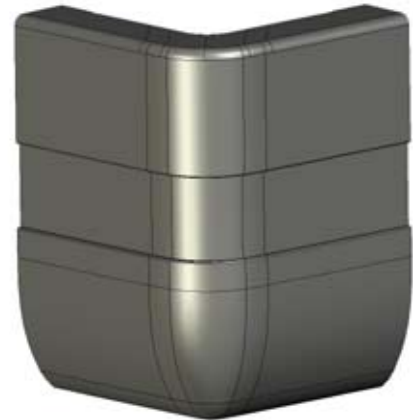


## CORNER COVER SET

### CORNER COVERS FOR FLEXHOOD

Corner cover set, being part of a modular extraction hood. The corner covers are fixed on the steel corner pieces by means of a click system.

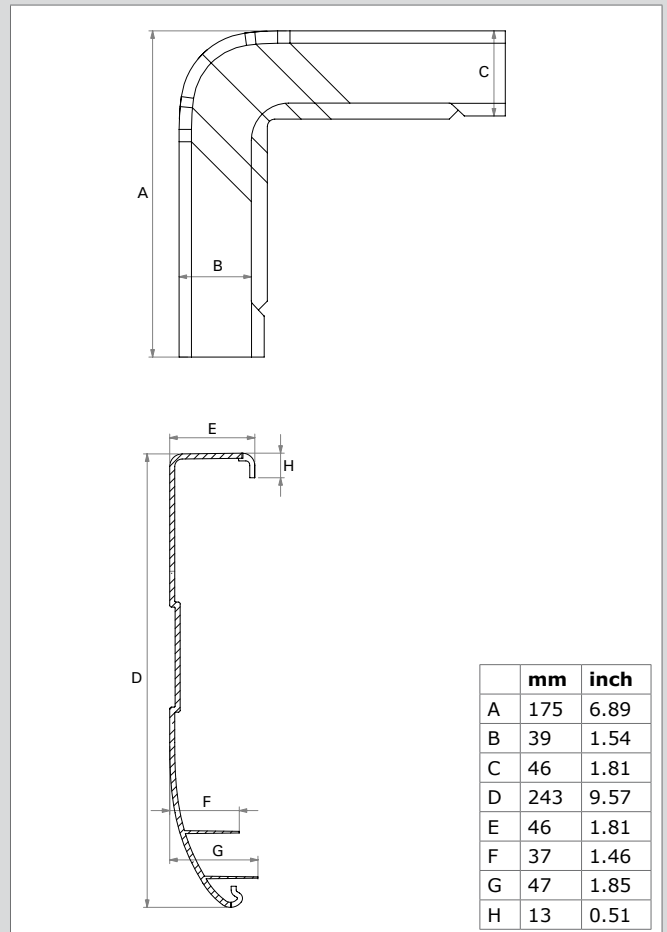


x4

#### SPECIFICATIONS

■ Physical dimensions and properties	
Material	talc-filled polypropylene
Colour	grey RAL 7024
Weight (net)	240 g (0.53 lbs) per piece
■ Where used	
FlexHood	modular extraction hood
■ Scope of supply	
Corner cover (4)	
■ Order information	
Article number	9750000020
Number/package	set of 4
■ Shipping data	
Gross weight	1,2 kg (2.6 lbs)
Packing dimensions	350 x 375 x 280 mm (13.8 x 14.8 x 11.0 in.)
Harmonized Tariff Code	8421.9900.99
Country of origin	the Netherlands

#### DIMENSIONS



Product type

Corner cover set

Article no.

9750000020

Product category

modular extraction hoods

Version

120111/C

Always check the latest version on [www.plymovent.com](http://www.plymovent.com).